

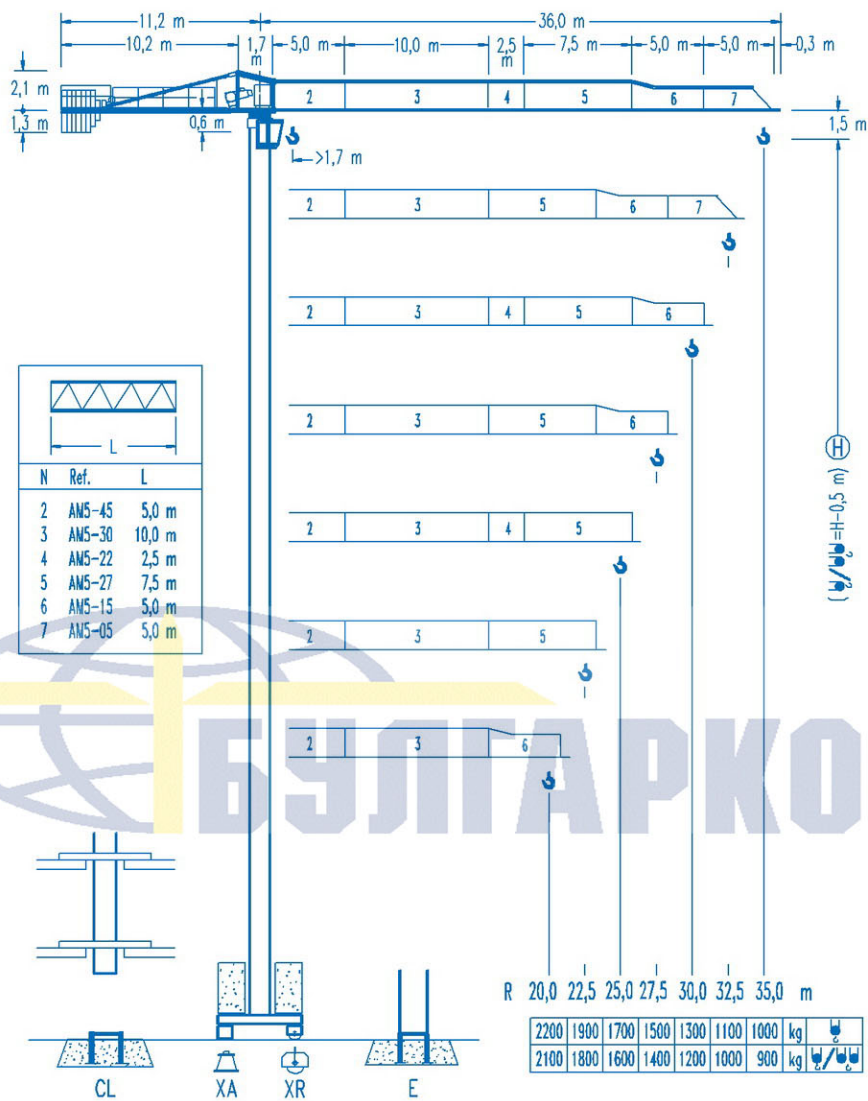


**COMANSA**

**LINDEN 500**

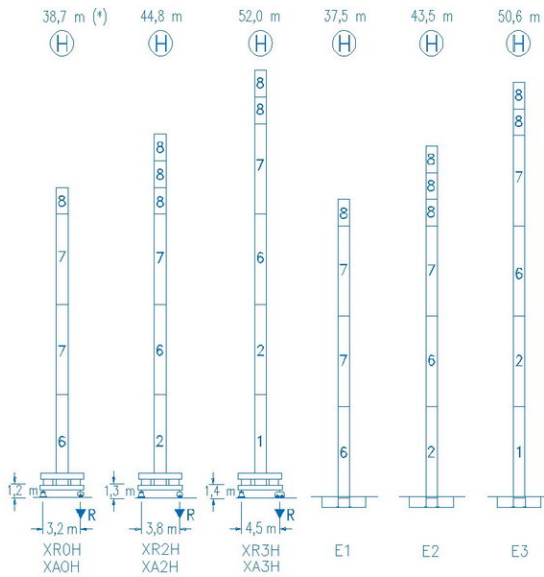
**5 LC 3510**

**5 t**



**CE**  
DIN 15018 H1 B3

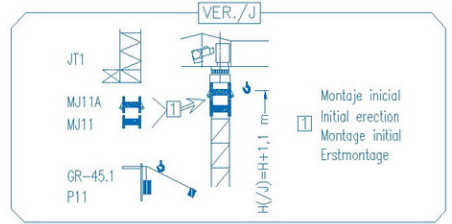
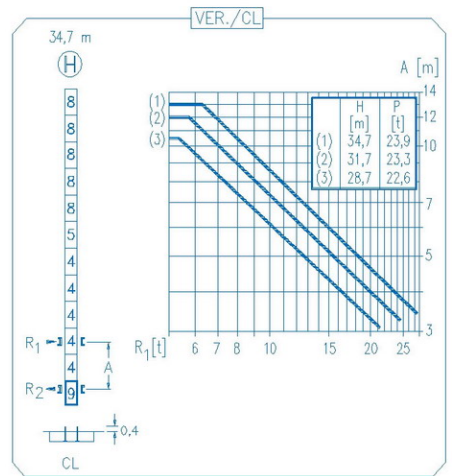
R	R(Cmax)	Cmax	20,0	22,5	25,0	27,5	30,0	32,5	35,0	
35,0	16,1 m	2500	1950	1700	1500	1340	1210	1100	1000	
	8,7 m	5000	1870	1620	1420	1250	1110	1000	900	
32,5	16,1 m	2500	1950	1710	1510	1350	1210	1100	1000	
	8,7 m	5000	1880	1620	1420	1250	1120	1000		
30,0	17,1 m	2500	2090	1820	1610	1440	1300	1200		
	9,2 m	5000	2010	1740	1520	1340	1200			
27,5	17,6 m	2500	2170	1890	1680	1500				
	9,5 m	5000	2080	1800	1580	1400				
25,0	17,8 m	2500	2200	1920	1700					
	9,6 m	5000	2110	1820	1600					
22,5	17,7 m	2500	2180	1900						
	9,5 m	5000	2080	1800						
20,0	17,9 m	2500	2200							
	9,6 m	5000	2100							



N	Ref.	h
1	MT123	10,1 m
2	MH124A	11,8 m
4	MH121	3,0 m
5	MH121A	3,0 m
6	MH114A	11,8 m
7	MH114	11,8 m
8	MH111	3,0 m
9	CL20	2,2 m

MH114=(4)MH111-0,2 m

- H=H+0,2 m
- H=H
- H=H
- H=H-0,2 m



(\*) SIN CAB - CAB. NO. - SANS CAB. - KAB. NEIN.

R. máx.	En servicio In operation En service In Betrieb	XR0H ..... 37,8 t XR2H ..... 42,2 t XR3H ..... 44,7 t
---------	---	---

R. máx.	Fuera de servicio Out of service Hors service Ausser Betrieb	XR0H ..... 58,4 t XR2H ..... 71,9 t XR3H ..... 80,1 t
---------	---	---

**CS2-1.9**  
1,9 kW  
16 m/min  
48 m/min

**CFU-2.2**  
2,2 kW  
0 ⇄ 80 m/min

**GR-6.5**  
65 Nm  
0 ⇄ 0,8 rpm

TS2-3.0	TS2-4.5	TS2-5.5
2x30 Nm	2x45 Nm	2x55 Nm
0 ⇄ 20 m/min		
XR0H	XR2H	XR3H

**ES3-18-12**  
18 kW

	I	II	III
m/min	8	32	64
kg	2500	2500	1300
m/min	4	16	32
kg	5000	5000	2600

**ES3-13-12**  
13,2 kW

	I	II	III
m/min	6	24	48
kg	2500	2500	1300
m/min	3	12	24
kg	5000	5000	2600

**EFU2-18-12**  
18 kW

**EFU2-11-12**  
11 kW

Tensión de alimentación Operating voltage Tension de service Betriebsspannung	400 V 3 ph 50 Hz
--	------------------------

Opcional Optional En option Kaufoption	*
---	---