

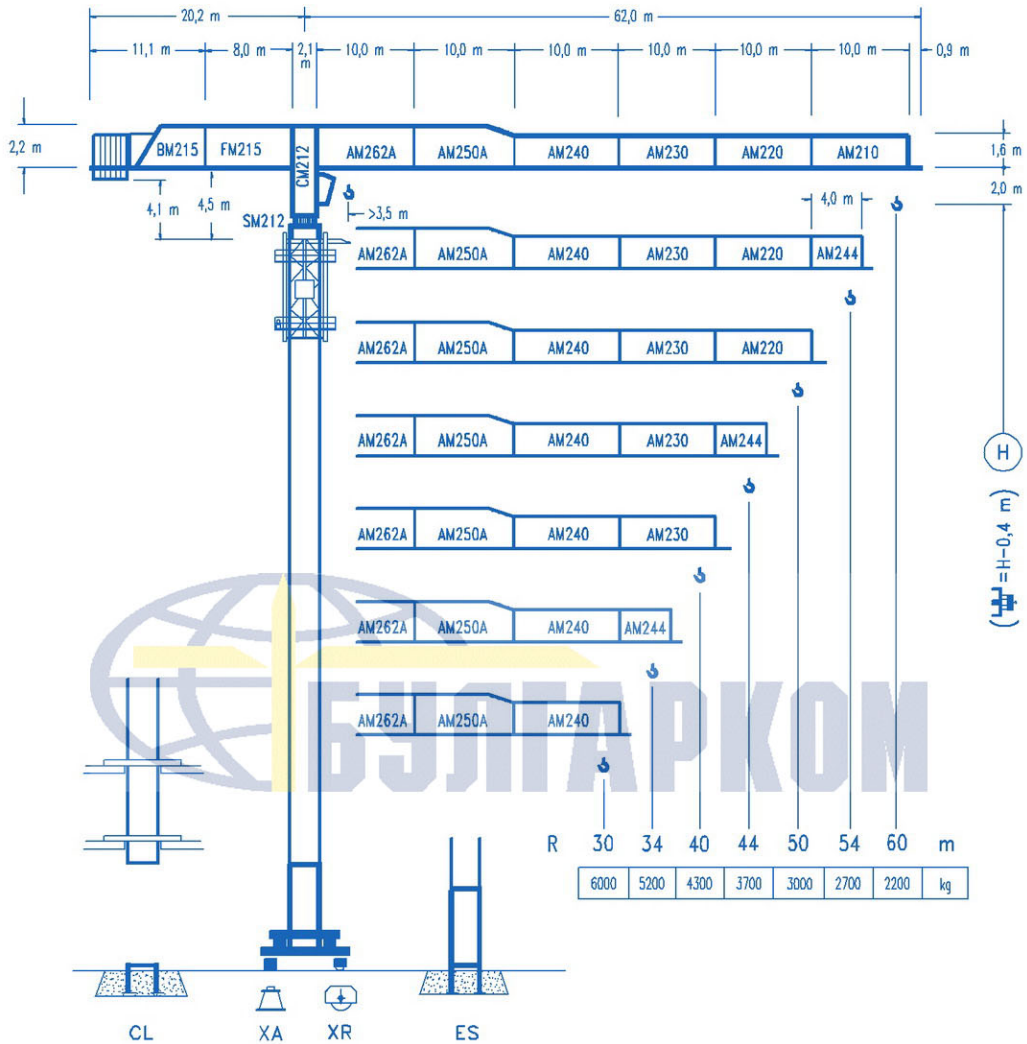


COMANSA

LINDEN 2100

21 LC 170

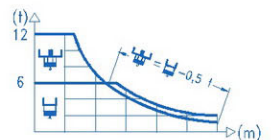
12 t

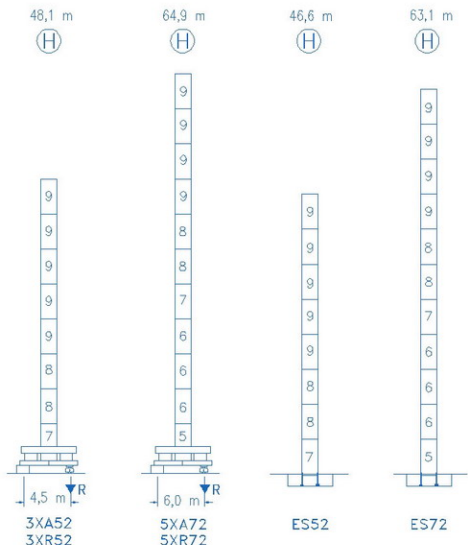


(H) $H = H - 0,4 \text{ m}$

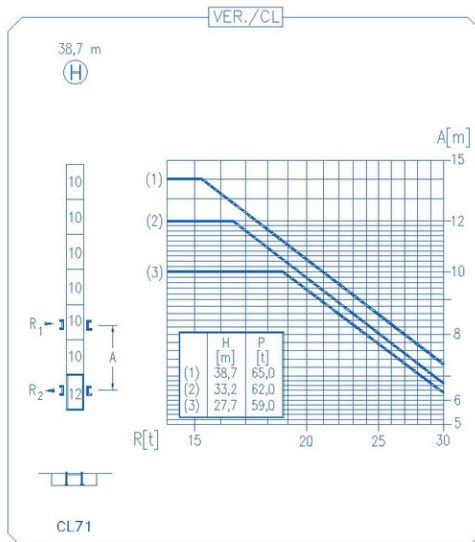
CE
DIN 15018 H1 B3

R	H			H								
60	14,2	20	25,0	25,8	30	34	40	44	50	54	60	m
	12000	7940	6000	6000	5045	4365	3610	3225	2760	2510	2200	kg
54	14,8	20	26,1	27,3	30	34	40	44	50	54	m	
	12000	8370	6000	6000	5390	4670	3865	3455	2965	2700	kg	
50	14,9	20	26,2	27,6	30	34	40	44	50	m		
	12000	8395	6000	6000	5450	4720	3910	3495	3000	kg		
44	15,4	20	25	27,1	28,9	34	40	44	m			
	12000	8750	6650	6000	6000	4990	4135	3700	kg			
40	15,7	20	25	27,8	29,9	34	40	m				
	12000	9015	6860	6000	6000	5180	4300	kg				
34	15,6	20	25	27,6	30,0	34	m					
	12000	8930	6795	6000	6000	5200	kg					
30	15,5	20	25	27	30	m						
	12000	8860	6735	6115	6000	kg						





N	Ref.	Ø (m)	h (m)
5	TS25	2,0	5,5
6	S24	2,0	5,5
7	TS24	2,0	5,5
8	S23	2,0	5,5
9	S22	2,0	5,5
10	S15	1,6	5,5
12	CLS15	1,6	3,1



R. máx.	En servicio In operation En service In Betrieb	3XR52 77,2 t
		5XR72 87,5 t

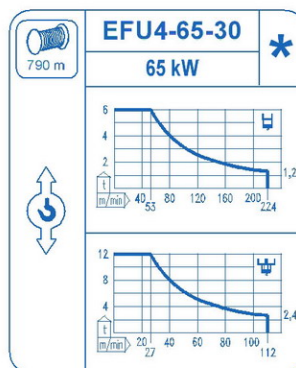
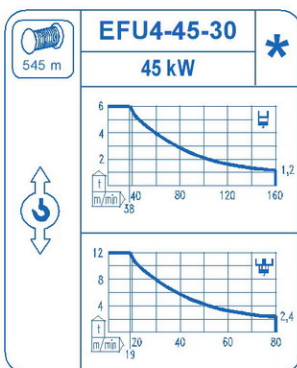
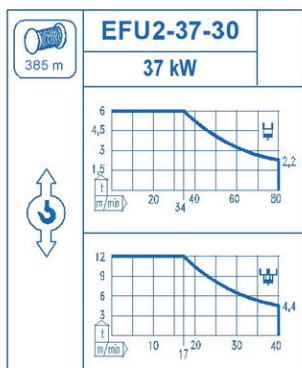
R. máx.	Fuera de servicio Out of service Hors service Ausser Betrieb	3XR52 90,9 t
		5XR72 130,0 t

CFU-7.5
7,5 kW
0 ⇄ 94 m/min

GR-12
2 x 120 Nm
0 ⇄ 0,7 rpm

TRA-7.5
2 x 75 Nm
0 ⇄ 20 m/min

TRA-7.5VC
2 x 75 Nm
0 ⇄ 20 m/min
5XR72



Tensión de alimentación Operating voltage Tension de service Betriebsspannung	400 V 3 ph 50 Hz
--	---------------------------------

Opcional Optional En option Kaufoption	*
---	----------