

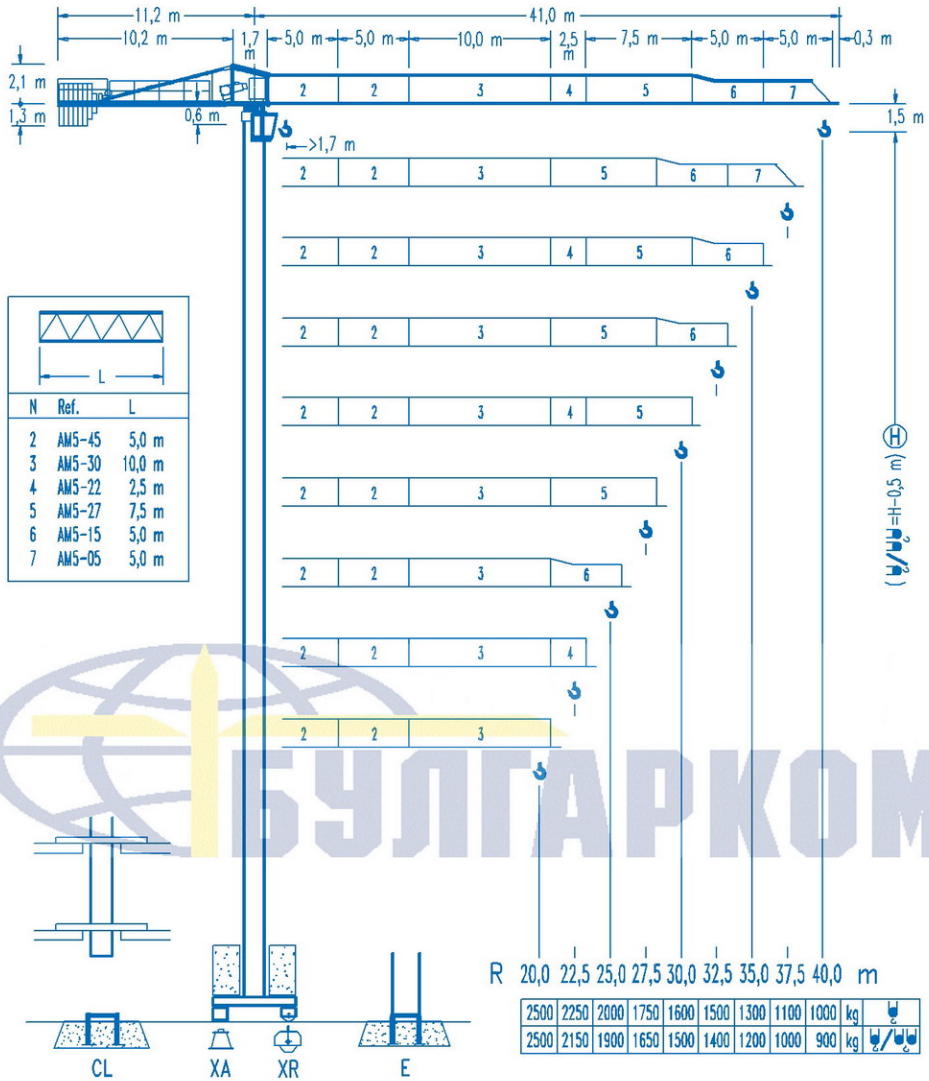


# COMANSA

## LINDEN 500

## 5 LC 4010

## 5 t

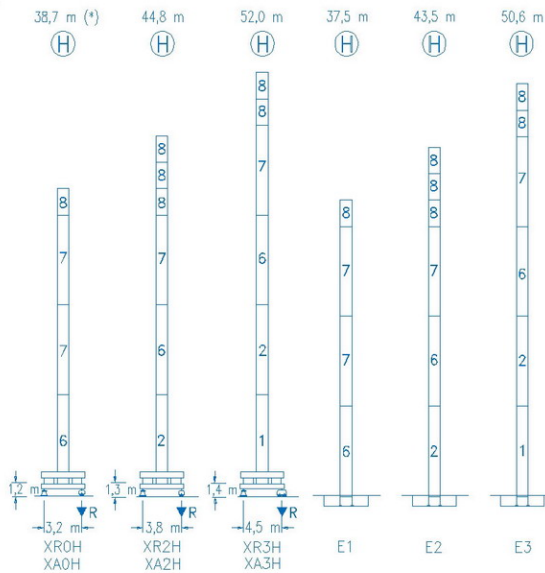


R 20,0 22,5 25,0 27,5 30,0 32,5 35,0 37,5 40,0 m

2500	2250	2000	1750	1600	1500	1300	1100	1000	kg	⊕
2500	2150	1900	1650	1500	1400	1200	1000	900	kg	⊕

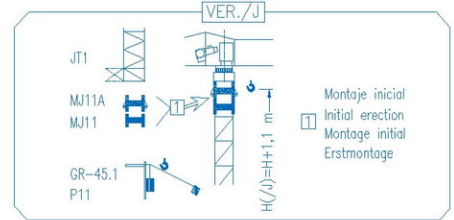
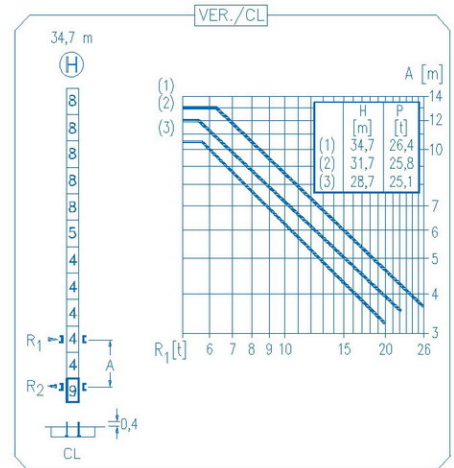
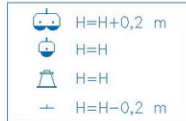
DIN 15018 H1 B3

R	R(Cmax)	Cmax	20,0	22,5	25,0	27,5	30,0	32,5	35,0	37,5	40,0	⊕
40,0	18,3 m	2500	2260	1980	1750	1570	1420	1290	1180	1080	1000	kg
	9,9 m	5000	2200	1910	1680	1490	1330	1200	1080	990	900	
37,5	18,6 m	2500	2300	2010	1780	1590	1440	1310	1200	1100	1000	kg
	10,0 m	5000	2230	1930	1700	1510	1350	1210	1100	1000		
35,0	19,9 m	2500	2480	2170	1930	1730	1560	1420	1300			kg
	10,7 m	5000	2410	2090	1840	1640	1470	1320	1200			
32,5	20,8 m	2500	2500	2290	2030	1820	1650	1500				kg
	11,1 m	5000	2540	2210	1940	1730	1550	1400				
30,0	20,3 m	2500	2500	2230	1970	1770	1600					kg
	10,8 m	5000	2460	2140	1880	1670	1500					
27,5	20,1 m	2500	2500	2200	1950	1750						kg
	10,7 m	5000	2430	2110	1860	1650						
25,0	20,5 m	2500	2500	2260	2000							kg
	10,9 m	5000	2480	2160	1900							
22,5	20,5 m	2500	2500	2250								kg
	10,9 m	5000	2470	2150								
20,0	20,0 m	2500	2500									kg
	11,0 m	5000	2500									



N	Ref.	h
1	MT123	10,1 m
2	MH124A	11,8 m
4	MH121	3,0 m
5	MH121A	3,0 m
6	MH114A	11,8 m
7	MH114	11,8 m
8	MH111	3,0 m
9	CL20	2,2 m

MH114=(4)MH111-0,2 m



(\*) SIN CAB. - CAB. NO. - SANS CAB. - KAB. NEIN.

R. máx.	En servicio In operation En service In Betrieb	XR0H ..... 40,3 t XR2H ..... 44,4 t XR3H ..... 46,7 t
---------	---	---

R. máx.	Fuera de servicio Out of service Hors service Ausser Betrieb	XR0H ..... 58,6 t XR2H ..... 72,5 t XR3H ..... 80,9 t
---------	---	---

**CS2-1.9**  
1,9 kW  
16 m/min  
48 m/min

**CFU-2.2**  
2,2 kW  
0 ⇄ 80 m/min

**GR-6.5**  
65 Nm  
0 ⇄ 0,8 rpm

TS2-3.0	TS2-4.5	TS2-5.5
2x30 Nm	2x45 Nm	2x55 Nm
0 ⇄ 20 m/min		
XR0H	XR2H	XR3H

**ES3-18-12**  
18 kW

	I	II	III
m/min	8	32	64
kg	2500	2500	1300
m/min	4	16	32
kg	5000	5000	2600

**ES3-13-12**  
13,2 kW

	I	II	III
m/min	6	24	48
kg	2500	2500	1300
m/min	3	12	24
kg	5000	5000	2600

**EFU2-18-12**  
18 kW

**EFU2-11-12**  
11 kW

Tensión de alimentación Operating voltage Tension de service Betriebsspannung	400 V 3 ph 50 Hz
--	------------------------

Opcional Optional En option Kaufoption	*
---	---